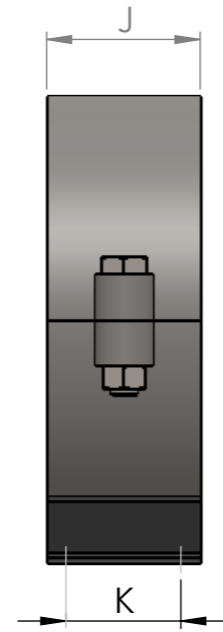
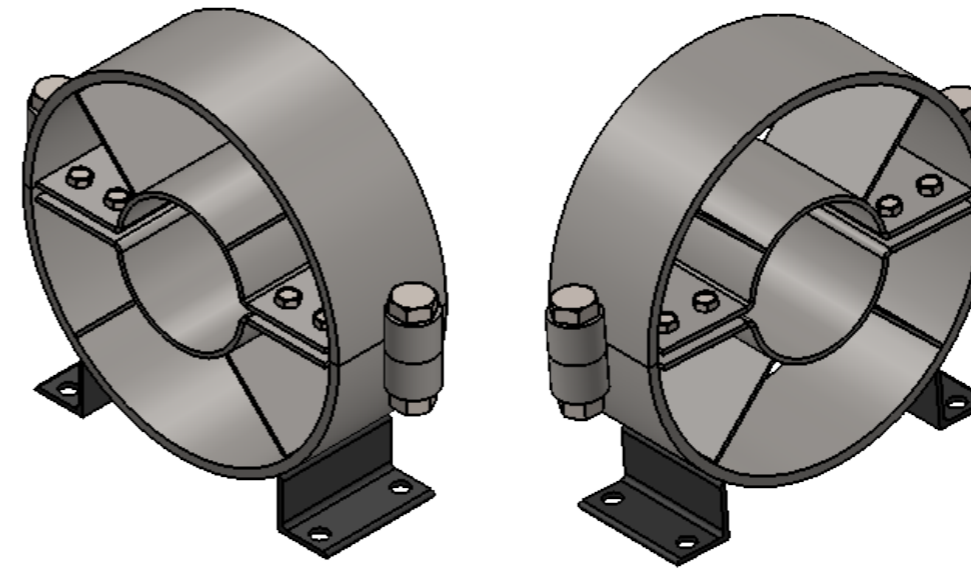


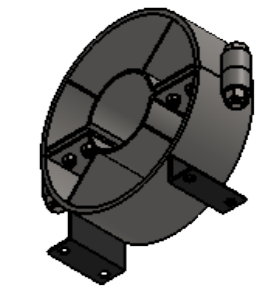
ELEVATION



SIDE VIEW



ISOMETRIC VIEWS



ISOMETRIC VIEW

Sr.No.	Nom. Size		A		B		C		D		E		F		G		H		I		J		K	
	in	mm	in	mm	in	mm	in	mm	in	mm	in	mm	in	mm	in	mm	in	mm	in	mm	in	mm	in	mm
1	1/2	13	0.68	17.3	6.89	175	5.2	132	0.55	14	11.4	290	11.3	287	6.1	155	0.52	13	0.47	12	3.94	100	2.56	65
2	3/4	19	0.68	17.3	6.89	175	5.2	132	0.55	14	11.6	294	11.3	287	6.1	155	0.6	15	0.47	12	3.94	100	2.56	65
3	1	25	0.68	17.3	6.89	175	5.2	132	0.55	14	11.6	294	11.3	287	6.1	155	0.6	15	0.47	12	3.94	100	2.56	65
4	1-1/4	32	0.64	16.2	7.48	190	5.35	136	0.55	14	11.9	302	11.5	292	6.15	156	0.6	15	0.47	12	3.94	100	2.56	65
5	1-1/2	38	0.63	16	7.4	188	5.43	138	0.55	14	12	306	11.7	297	6-1/4	159	0.6	15	0.6	15	3.94	100	2.56	65
6	2	50	0.66	16.8	8.27	210	6.42	163	0.67	17	14.2	361	15.54	344	7.13	181	0.69	17.5	0.6	15	3.94	100	2.56	65
7	2-1/2	64	0.66	16.8	8.27	210	6.42	163	0.67	17	14.2	361	15.54	344	7.13	181	0.69	17.5	0.6	15	3.94	100	2.56	65
8	3	76	0.66	16.8	8.27	210	6.42	163	0.67	17	14.2	361	15.54	344	7.13	181	0.69	17.5	0.79	20	3.94	100	2.56	65
9	4	100	0.74	18.7	10.12	257	7.44	189	0.67	17	16.53	420	15.47	393	8	204	0.83	21	0.79	20	5.7	145	3.74	95
10	5	127	0.68	17.2	10.7	272	8.3	211	0.67	17	18.15	461	17.17	436	8-7/8	225	0.79	20	0.79	20	5.7	145	3.74	95
11	6	150	0.64	16.2	11	280	8.5	216	0.67	17	18.98	482	17.56	446	9	230	0.98	25	0.98	25	5.7	145	3.74	95
12	8	200	0.97	24.6	12.2	310	9.21	234	0.67	17	20.6	523	19	483	9-9/16	253	1.08	27.5	0.98	25	5.7	145	3.74	95
13	10	250	0.98	25	13	330	10.24	260	0.67	17	22.52	572	21.15	537	10-9/16	277	1.02	26	0.98	25	5.7	145	3.74	95
14	12	300	0.91	23	13.98	355	11.06	281	0.83	21	24.17	614	23.3	592	12-25/32	311	1.02	26	1.1	28	7.68	195	5.52	140
15	14	350	1.13	28.6	15.35	390	11.97	304	0.83	21	26	662	25.2	640	13-1/8	336	1.06	27	1.1	28	7.68	195	5.52	140
16	16	400	1.54	39.2	17	432	13.15	334	1.22	31	28.66	728	28.11	714	14-9/16	380	1.18	30	1.18	30	7.87	200	5.31	135
17	18	450	1.97	50	18.7	475	13.94	354	1.22	31	30.63	778	29.69	754	15-7/8	400	1.38	35	1.38	35	7.87	200	5.31	135
18	20	500	1.89	48	19.49	495	14.84	377	1.22	31	32.44	824	31.46	799	16-3/4	422	1.38	35	1.38	35	7.87	200	5.31	135

NOTES :-

MATERIAL: CARBON STEEL
 FINISH: PAINTED
 FOR COPPER PIPES: USE DIELECTRIC SPACERS

PIPE GUIDES ARE NOT DESIGNED TO COPY DEAD WEIGHT LOADS.
 PIPING MUST BE INDEPENDENTLY SUPPORTED WITH PROPER PIPE SUPPORTS.

PIPE GUIDES ARE DESIGNED TO MAINTAIN AXIAL ALIGNMENT OF PIPING
 AS IT EXPANDS AND CONTRACTS DURING NORMAL OPERATION.

UNLESS OTHERWISE SPECIFIED: DIMENSIONS ARE IN MILLIMETERS			FINISH:			DEBURR AND BREAK SHARP EDGES			DO NOT SCALE DRAWING			REVISION		
SURFACE FINISH:									Crest Technologies CREST TECHNOLOGIES			TITLE:		
TOLERANCES:												SPIDER PIPE GUIDE		
LINEAR:												DWG NO. CE-075.0-A3-00		
ANGULAR:												A3		
NAME	SIGNATURE	DATE												
DRAWN MOHIT		16-04-25												
CHK'D AFTAB		16-04-25												
APP'VD PRATIK		16-04-25												
MFG														
Q.A						MATERIAL: C.S.								
						WEIGHT:			SCALE:1:10			SHEET 1 OF 1		